



SKYLINE CONTRACTING COMPANY PROFILE



Office No. 106
Mashreq Bank
Building Fujairah

Office No. 2203
Donna Tower
Dubai Silicon Oasis

Industrial Batha
Al Hayer Office
18 Al Ain Abu Dhabi

www.skylineco.ae

ABOUT US

We have only one objective: to ensure our clients mission objectives are achieved with the highest level of capability and assurance, and at the lowest possible cost. Our methodology ensures that vital governmental and private sector's projects are stood up on time and on schedule. Our clients come to us with confidence that we have the expertise to take service delivery to the next level of performance.

About Our Company

We proudly introduce **SCC Skyline Contracting**, a well-established name in the construction industry with over two decades of experience. Our journey began in the 1990s in the Emirate of Fujairah, and over the years, we have evolved into a comprehensive construction solutions provider. With a strong presence in both Dubai, Fujairah, & Abu Dhabi. we are a **Unlimited contracting company** committed to delivering high-quality, reliable, and efficient construction services across the UAE.



OUR SERVICES



Buildings Constructions

As a leading construction firm in Dubai, SCC Skyline - Group excels in delivering exceptional residential and commercial projects.



Industrial Projects

SCC Skyline's dedication to quality and reliability makes us a preferred choice for industrial projects.



Pipelines & Utilities

At SCC Skyline Contracting, we specialize in delivering reliable and efficient solutions for your pipeline and utility projects. Our expertise ensures your project is completed on time and within budget.



MEP Services

Our MEP Division boasts a team of highly skilled professionals and technicians with extensive experience in the region. Dedicated to exceeding your expectations, we are committed to delivering MEP solutions that precisely align with your project requirements.



OUR SERVICES

Our aim is to achieve “total customer service excellence” for all our clients and customers. Customer satisfaction is our Motto. Our prime concern is to provide quality work beyond client expectation.

We work in harmony towards achieving our common vision. There is synergy in our team, converting each personal weakness into strengths. We direct individual accomplishments towards organizational objectives by sharing together, working together and succeeding together.

We are open and honest with constructive feedback, regardless of our role and the recipient. We take feedback as an opportunity to develop ourselves and continuously improve on our skills, products and services.

OUR VISION



Industry Leadership

To be a recognized leader in the construction industry by delivering innovative, efficient, and high-quality projects.



Sustainability and Innovation

To champion sustainable building practices and innovative solutions that create lasting value for clients and communities.



Commitment to Excellence

To uphold the highest standards of integrity, safety, and craftsmanship in every project, fostering trust and long-term relationships with clients and partners.



CORE VALUE



Customer-Focus

Our aim is to achieve “total customer service excellence” for all our clients and customers. Customer satisfaction is our motto. Our prime concern is to provide quality work beyond client expectations.



Communication

We are open and honest with constructive feedback, regardless of our role and the recipient. We take feedback as an opportunity to develop ourselves and continuously improve on our skills, products, and services.



Teamwork

We work in harmony towards achieving our common vision. There is synergy in our team, converting each personal weakness into strengths. We direct individual accomplishments towards organizational objectives by sharing together, working together, and succeeding together.



OUR OBJECTIVES

- SCC Skyline has enjoyed numerous recognized achievements within a short span of time as a “Total Solution Provider” for all types of construction requirements by organizing our talents and resources. The principal objective is to govern the uniform conduct, policies, and procedures for its sister companies and ensure their compliance.
- To maintain and further enhance the quality of services by introducing sophisticated technology and automated monitoring systems throughout the Group. Institutionalize corporate training programs to ensure effective development of staff members through orientation of new employees.
- Improve efforts to hire qualified and talented individuals with strong technical, management, and business development credentials, along with vast experience, to support, accelerate, and strive to achieve growth in size, capabilities, and contributions to various sectors of the construction industry.

CORE BUSINESS

SCC Skyline is highly specialized in the following project development areas:

- **Civil Engineering**
- **Construction**
- **Infrastructure / Industrial**
- **MEP (Mechanical, Electrical, and Plumbing)**

Among its clients in the U.A.E., SCC Skyline is recognized as a prompt and reliable deliverer of successful results. Being flexible and dynamic, SCC Skyline adapts easily to meet all requirements of prospective customers.

SCC Skyline owns and operates projects linked to expertise in design, engineering, and construction across real estate, infrastructure, energy, and factory-related sectors.

By combining owner perspective with technical understanding, SCC Skyline has become one of the recommended and successful firms in the U.A.E.

OUR MISSION

Mission

To perform for our customers the highest level of quality construction services at fair and competitive prices. To ensure the longevity of our company through repeat and referral business achieved by customer satisfaction in all areas including timeliness, attention to detail, and service-minded attitudes.

Mission

To maintain the highest levels of professionalism, integrity, honesty, and fairness in our relationships with suppliers, subcontractors, professional associates, and customers.

OUR PROJECT

Waste Water Treatment Plant Expansion

- ▣ **Client:** TANQIA FZC /
Government of Fujairah
- ▣ **Consultant:** Masar
Engineering Consultancy.



Waste Water Treatment Plant Expansion



Waste Water Treatment Plant Expansion



OUR PROJECT

Construct and complete a G+1 Commercial Centre and Allied Services

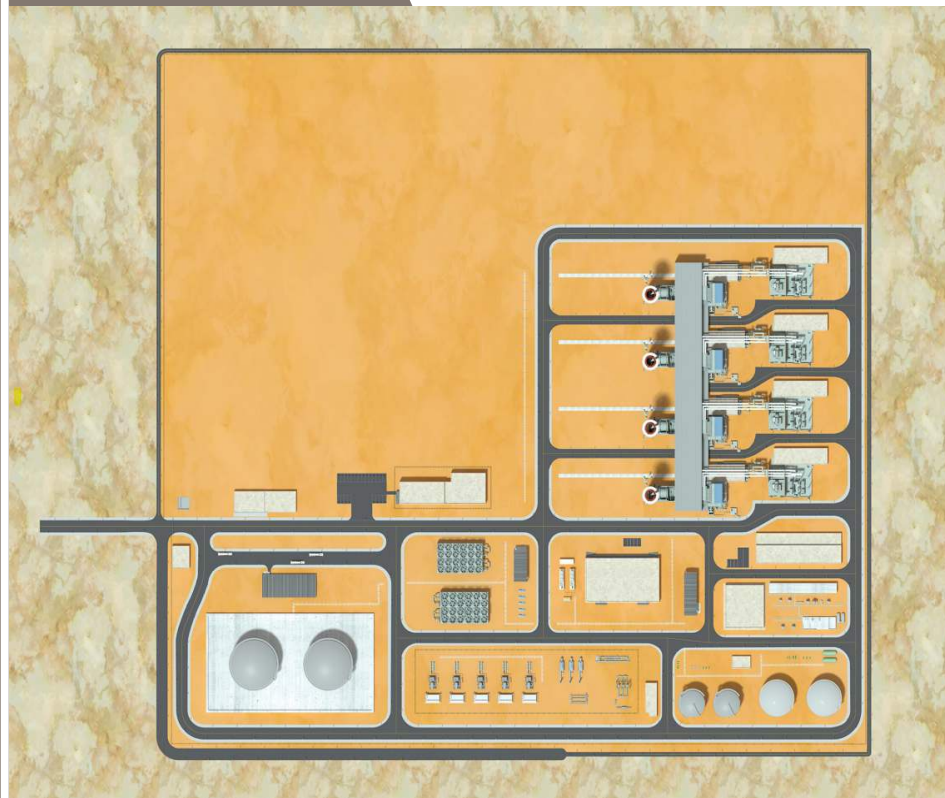
Client: Mohamed Bin Rashid Housing Establishment.

Consultant: Design House Engineering Consultancy.



Proposed B+G+1 Commercial Centre & Allied Services



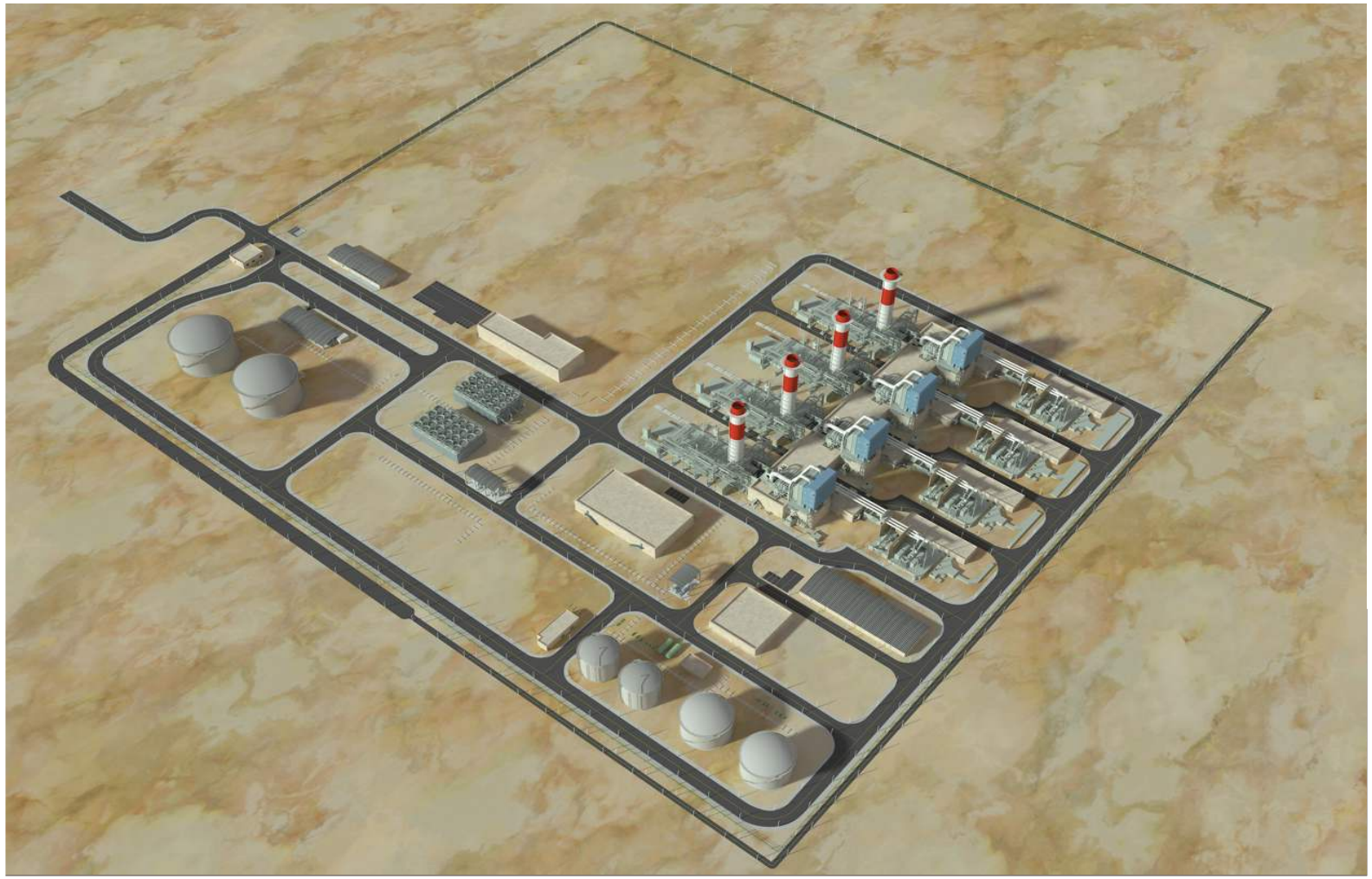


OUR PROJECT

F3 Independent Power Plant

- **Client:** Samsung C & T Corporation
- **Location:** Fujairah

F3 Independent Power Plant



OUR PROJECT

Construction of Masjid and G+1 Imam House

■ **Client:** BT Properties

■ **Consultant:** ASICON Development





OUR PROJECT

Construction of New Mosques in Northern Emirates

- **Client:** Ministry of Presidential Affairs
- **Consultant:** Accuracy Engineering Consultancy LLC

Construction of New Mosques in Northern Emirates





OUR PROJECT

F3 Independent Power Plant

▣ **Client:** Samsung C & T Corporation

▣ **Location:** Fujairah



F3 Independent Power Plant





OUR PROJECT

Construction of Sewage Treatment Plant STP 1

- ▣ **Client:** Mobadrat (Ministry of Presidential Affairs)
- ▣ **Consultant:** Masar Engineering Consultancy.

Construction of Sewage Treatment Plant STP 1



Construction of Sewage Treatment Plant STP 1



OUR PROJECT

**Construction of B+G+2 Floor
Palace+ Majlis+ Service Areas**

- ▣ **Client:** Ali Abdullah Ibrahim
Lahbash
- ▣ **Consultant:** Future
Engineering Design Center.



Construction of B+G+2 Floor Palace+ Major+ Service Areas





OUR PROJECT

DEVELOPMENT OF EMIRATES TRANSPORT

- ▣ **Client:** Emirates General Transport and Services- Emirates Transport
- ▣ **Location:** Emirates General Transport and Services- Emirates Transport

DEVELOPMENT OF EMIRATES TRANSFORT



OUR PROJECT

G+3P+M+11 Commercial Residential Building

▣ **Client:** Ebrahim Ali Abdullah

▣ **Consultant:** Future
Engineering Design Center



G+3P+M+11 Commercial Residential Building



OUR PROJECT

G+7 FLOOR BUILDING

- ▣ **Client:** Ali Abdullah Ibrahim Lahbash
- ▣ **Consultant:** Future Engineering Design Center.



G+7 FLOOR BUILDING



OUR PROJECT

The Project of H. H President of U. A. E

- ▣ **Client:** 13 Amateurs Football Clubs in U. A. E
- ▣ **Consultant:** Petra Engineering Architectural Consultants- Dubai



▣ The Project of H. H President of U. A. E





OUR PROJECT

G+M+10 FLOOR BUILDING

■ **Client:** Abdullah Al Hafity

■ **Consultant:** Future
Engineering Design Center

OUR PROJECT

2B+G+M+19 TYPICAL FLOOR BUILDING

- ▣ **Client:** Welfare Association -
Fujairah
- ▣ **Consultant:** Al Turath Engineering
Consultant - Dubai





OUR PROJECT

CONSTRUCTION OF G+9 FLOOR BUILDING

- ▣ **Client:** Khaled Al Haj
- ▣ **Consultant:** Future
Engineering Design Center

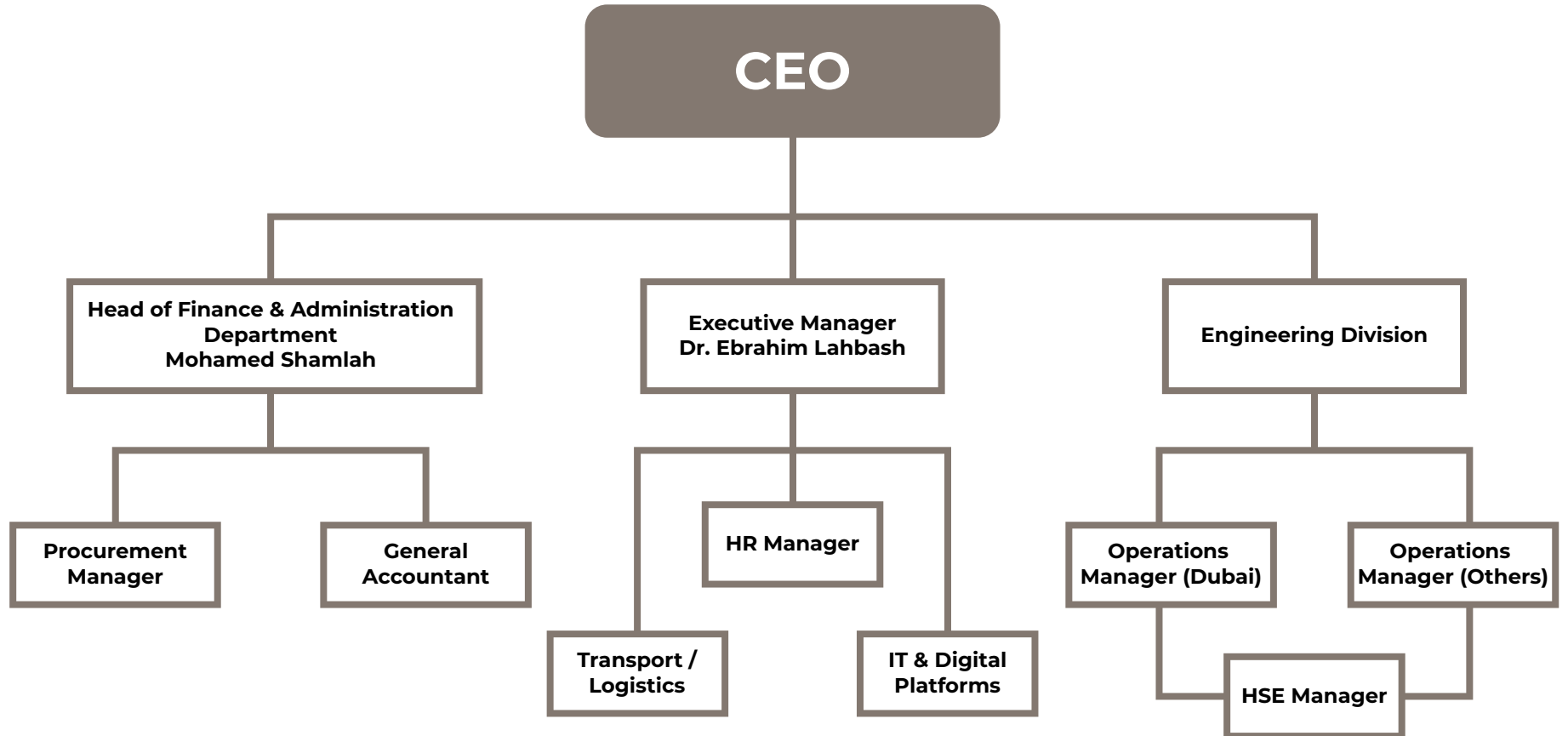
OUR PROJECT

G+8 FLOOR BUILDING

- ▣ **Client:** Naser Selem Saif Al Noaimi
- ▣ **Consultant:** Al Turath Engineering Consultant - Dubai



ORGANIZATIONAL CHART



MANPOWER INDEX

Designation

Alumium Workers

Plumber

Electricians

Painters

Designation

General Masons

Shuttering Carpenters

Steel Fixers

Labors

Total MANPOWER

500

THANK YOU

We have professional people, they are experts in their fields, they bring a strong service ethos to everything they do, they take pride and ownership in the jobs they do, we bring passion, pride and experience together.

We have only one objective: to ensure our clients mission objectives are achieved with the highest level of capability and assurance, and at the lowest possible cost. Our methodology ensures that vital governmental and private sector's projects are stood up on time and on schedule. Our clients come to us with confidence that we have the expertise to take service delivery to the next level of performance.

We have worked in many of the most demanding and secure environments within the United Arab Emirates it means that we can support our clients wherever their needs require. As part of SCC Skyline Group, we are able to draw upon the accumulated experience of an organization that has set new standards of excellence in sectors including residential complexes, commercial buildings, industrial units, hospitals, schools, banks, mosques as well as infrastructure. We apply the very best international insights to keep our clients at the leading edge.

I hope this provides you with a few reasons to get to know SCC Skyline better whether you are a potential customer, investor or developer, we look forward to finding out how we can work together to prove our strength in construction industry.



Mohamed Zayed
CEO

BANKING PARTNERS



MAJOR CLIENTS



ديوان ولي العهد
CROWN PRINCE COURT



وزارة شؤون الرئاسة
MINISTRY OF PRESIDENTIAL AFFAIRS



قيادة الأشغال العسكرية
Command of Military Works

MAJOR CLIENTS



مؤسسة محمد بن راشد للإسكان
Mohammed Bin Rashid Housing Est.



جمعية الفجيرة الخيرية
FUJAIRAH WELFARE ASSOCIATION



اتحاد الإمارات العربية المتحدة لكرة القدم
UAE FOOTBALL ASSOCIATION

CONTACT US



+971 4 33 222 45

+971 9 222 7 1 00

info@skylineco.ae

www.skylineco.ae

Office No. 2203
Donna Tower
Dubai Silicon Oasis

Office No. 106
Mashreq Bank Building
Fujairah

Industrial Batha
Al Hayer Office
18 Al Ain Abu Dhabi



SKYLINE
CONTRACTING CO. LLC

Thank You

www.skylineco.ae